

AU *uminator*



AULUMINATOR MANUAL

WARNING !

**THE KNIFE GATE AND / OR MAIN
GATE MUST BE OPEN BEFORE
THE BELT IS TURNED ON OR
IMMEDIATE DAMAGE WILL OCCUR
TO THE BELT DRIVE SYSTEM –
REAR GATE AND BELT**



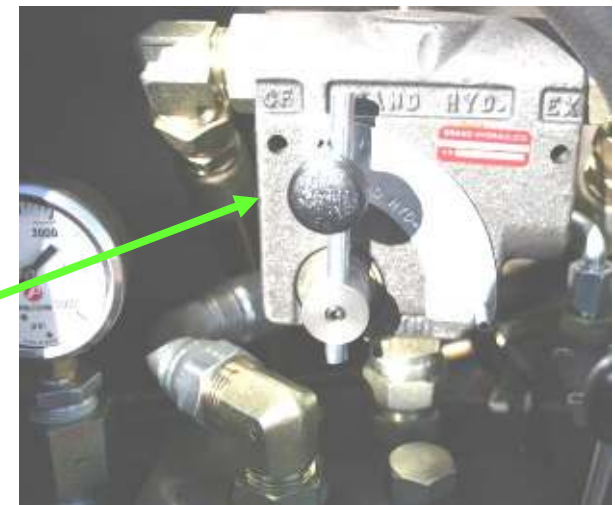
ELECTRIC / MANUAL VALVE

1) PULL ON THE KNIFE GATE CONTROL LEVER TO RAISE THE KNIFE GATE

2) PULL ON THE MAIN GATE CONTROL LEVER TO RELEASE THE GATE LOCK CYLINDERS AND RAISE THE MAIN GATE

3) PULL ON THE BELT CONTROL LEVER TO TURN THE BELT ON (IT WILL STAY ON UNTIL IT IS PUSHED BACK OUT OF THE DETENT)

4) ROTATE THE FLOW CONTROL VALVE CLOCKWISE UNTIL THE BELT SPEED IS AS REQUIRED



MANUAL VALVE



TO OPEN MAIN GATE:

1. Open knife gate (pull knife handle)
2. Retract lock cylinders (pull lock handle)
3. Open main gate slowly, (pull main handle)
as gate fully opens build pressure to 2000 psi. to hold gate fully open
4. Start belt (pull belt handle)
5. Adjust flow control to desired speed

TO CLOSE MAIN GATE

1. Stop belt (push belt handle)
2. Close main gate fully (push main handle)
3. Extend lock cylinders (push lock handle)
4. Close knife gate (push knife handle)

Main and lock controls are linked to avoid damage to the locks and or the main gate. Please leave bridge in place.

PRESSURES ON THE GUAGE WILL VARY WITH LOAD AND TEMPERATURE. THE PRESSURES LISTED HERE ARE WHAT YOU SHOULD EXPECT TO SEE UNDER “NORMAL” CONDITIONS . THE SYSTEM RELIEF VALVE IS SET AT 3000 P S I



**SYSTEM ON 500 PSI
KNIFE GATE UP 2700 P S I
KNIFE GATE DOWN 2000 P S I
MAIN GATE UP 2700 P S I
MAIN GATE DOWN 1500 P S I
BELT ON 1000-2700 PSI**

THE TRUCK NEEDS TO SUPPLY A MINIMUM OF 20 GPM AT 3000 PSI



**HIGH PRESSURE HYDRAULIC FILTER WITH
REPLACEABLE ELEMENT**

**THIS IS A SECONDARY FILTER , THE TRUCK
WET KIT SHOULD BE EQUIPPED WITH A
PRIMARY RETURN LINE FILTER**

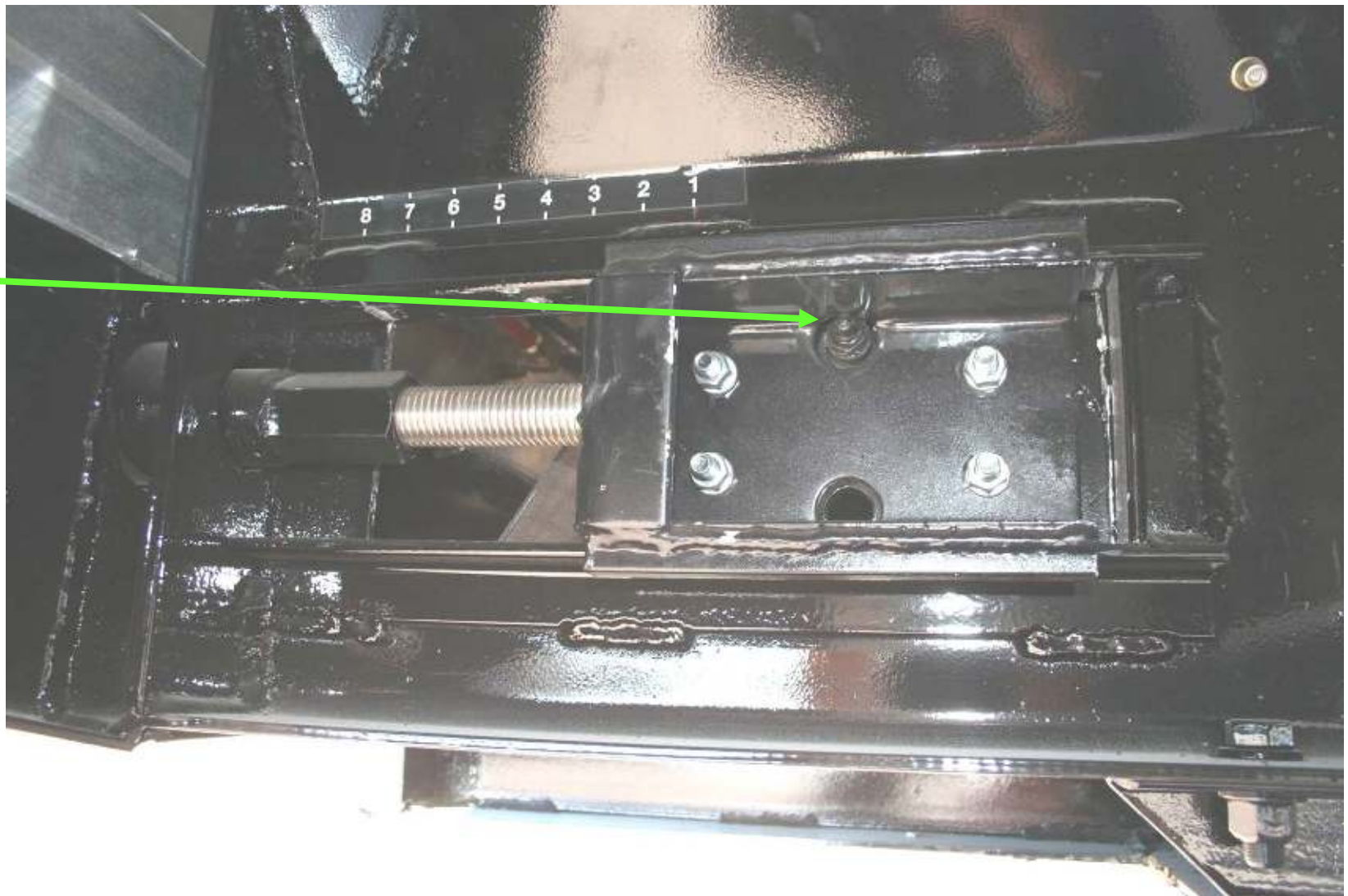


BELT ADJUSTMENT :

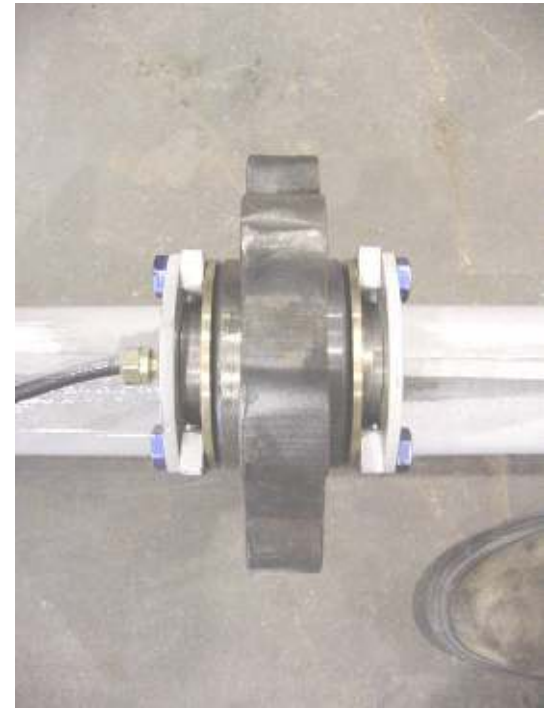
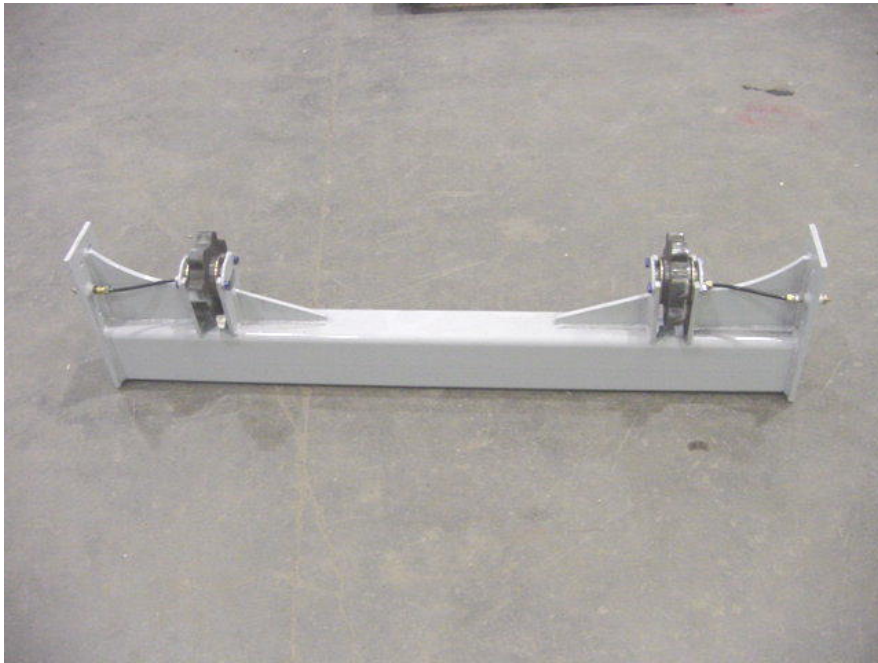
TO TIGHTEN THE BELT, MOVE THE LOCK OFF AND TO THE SIDE , TURN THE ADJUSTING NUT CLOCKWISE UNTIL THE BELT IS BACK UP TO THE PROPER ADJUSTMENT . THE RANGE OF PROPER ADJUSTMENT IS INDICATED BY THE TWO HOLES IN THE ADJUSTMENT INDICATOR LOCATED ON THE SIDE OF THE TRAILER .



**GREASE
HERE
BOTH
SIDES**

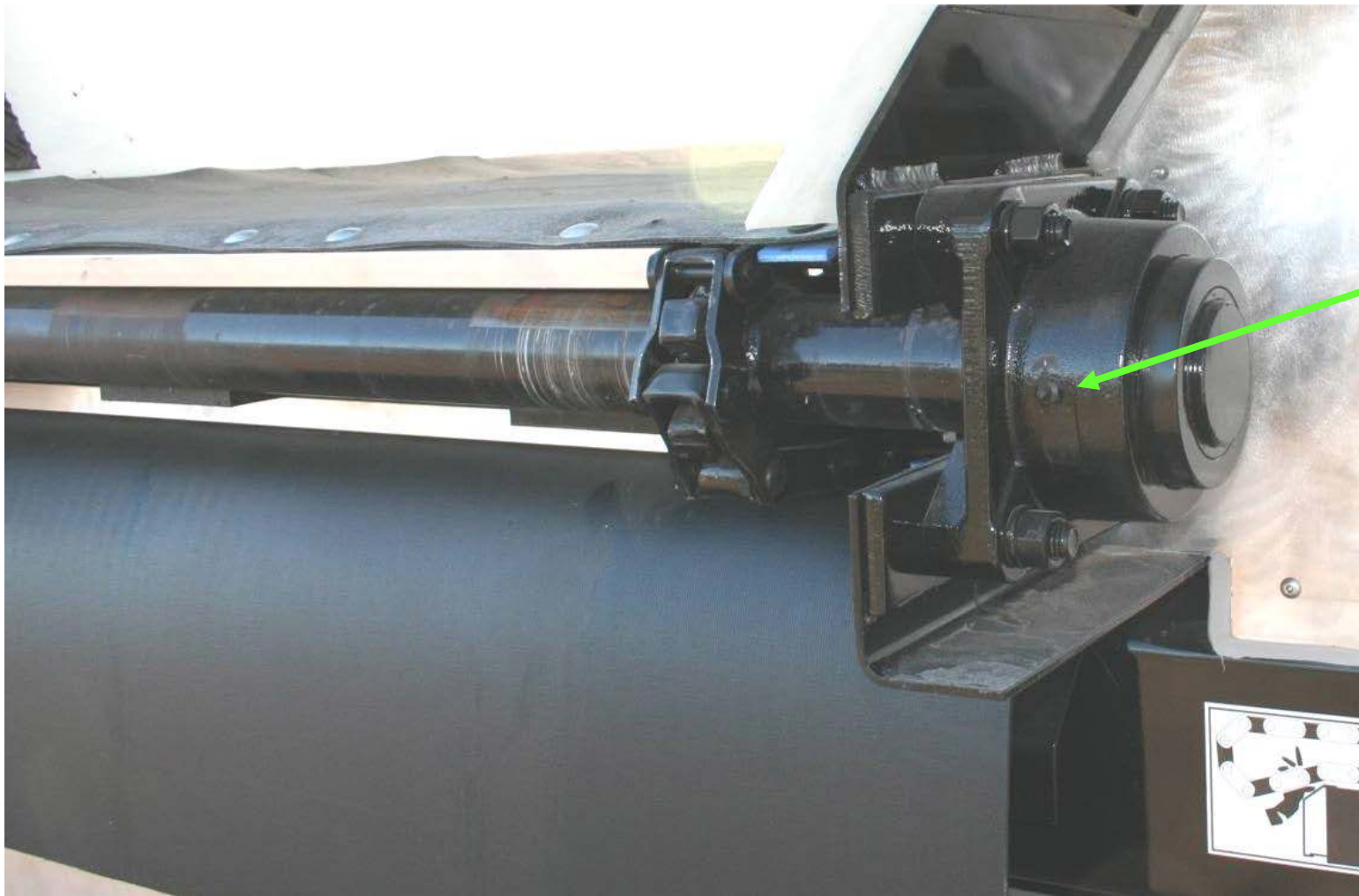


**ADJUST THE FRONT TAKE-UP EVENLY FROM SIDE TO SIDE
TO KEEP THE BELT TAKE-UP SQUARE IN THE TRAILER**



FRONT TAKE-UP ASSEMBLY

(information only)



**GREASE
ZERK**

REAR BEARING AND SHAFT

88HD CHAIN



**ESKRIDGE GEAR BOX
CHAR-LYNN MOTOR
USE 90WT GEAR OIL**



**FLOOR LINER IS UHMW 3/8
PLASTIC**

SIDE LINER IS HMW 3/16 PLASTIC



**MANUAL AIR RIDE
DUMP VALVE – USED
TO DUMP THE
SUSPENSION BEFORE
TRAILER IS PUT ON
THE LANDING GEAR**

**THIS ELIMINATES THE
STRESS PUT ON THE
LANDING GEAR IF THE
TRAILER AIR
SUSPENSION SETTLES
WHILE UNHOOKED
FROM THE TRACTOR**

**WILL AUTOMATICALLY
RESET WHEN TRAILER
BRAKES ARE
RELEASED,**

**IF TRAILER HAS SAT
FOR AWHILE, MAKE
SURE SPRINGS ARE
INFLATED BEFORE
MOVING THE TRAILER.**

**WHEN UN-HOOKING, SET TRAILER BRAKES,
LEAVE TRUCK BRAKE OFF. GET OUT AND PUSH
IN THE TRAILERS DUMP VALVE, START
CRANKING LEGS, BEFORE THE LEGS TOUCH
MAKE SURE ALL AIR HAS EXHAUSTED, THE
TRAILER WILL CREEP FORWARD JUST A FEW
INCHES. CRANK TO PUT WEIGHT ON THE LEGS
AND UNHOOK FROM THE TRAILER.**



HD LANDING GEAR 50000 LB

NEW LIFE 1013992K

***NEW FOR 2009'S ALUMINUM BELT
RETURN***

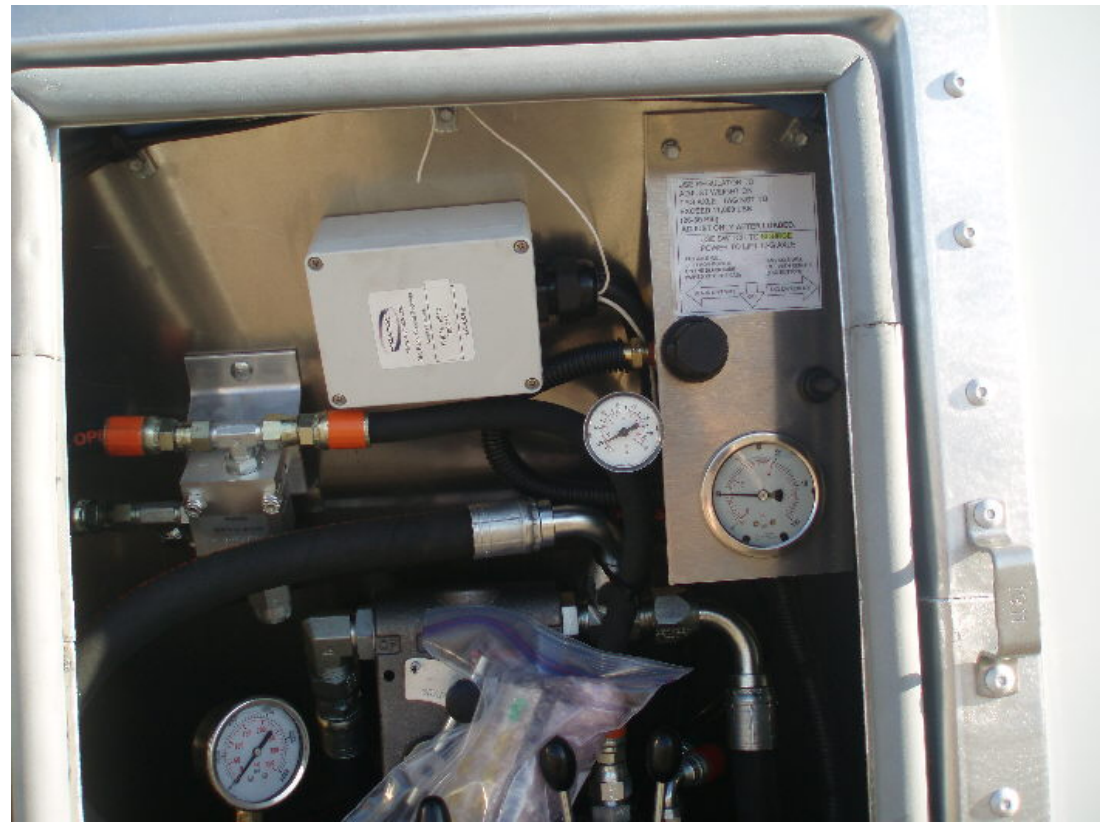


FRONT COUPLER IS BOLT – ON , CAN BE REMOVED IF NEEDED FOR SERVICING THE BELT AND FRONT TAKE-UP ASSEMBLY



ELECTRICAL SOCKET FOR CAB CONTROL OF THE HYDRAULIC VALVE MOUNTED AT THE REAR OF THE TRAILER

THIS IS PAINTED YELLOW – DO NOT MISTAKE IT FOR THE TRAILER LIGHT SOCKET



NEW TO 2009'S THE CORDLESS REMOTE, REPLACES THE SECOND RECEPTACLE



ELECTRICAL SOCKET FOR TRAILER LIGHTS AND ABS BRAKE POWER

BLUE- CENTER PIN ABS & REMOTE POWER

WHITE- 12 O-CLOCK = GROUND

BLACK- 2 O-CLOCK = OPTIONS *

YELLOW – 4 O-CLOCK = LEFT TURN

RED – 6 O-CLOCK = STOP LAMPS

GREEN – 8 O-CLOCK = RIGHT TURN

BROWN – 10 O-CLOCK = ALL CLEARANCE

***MOST TRAILERS WITH OPTIONAL BACK-UP LAMPS WILL ALSO HAVE A SWITCH ON THE CAST HOUSING TO OPERATE THEM.**

LIFT AXLES CAN ALSO BE WIRED ON THE BLACK.



SPRING BRAKE VALVE

**PART NUMBER SEAL CO
110800**



A B S BRAKE VALVE

**PART NUMBER SEAL CO
KIT #2 21-1-10S
(2S-1M)**



**SUSPENSION LEVELING
VALVE**

**PART NUMBER
HENDRICKSON AKH-43-3**



**HENDRICKSON
INTRAAX AAT
17" RIDE
HEIGHT.**

(NON LIFTING)

**ADJUST RIDE
HEIGHT TO 17
INCHES**

**(CENTER OF AXLE
TO TOP OF AIR BAG
SPACER)**

BRAKE SHOES – 16.5 X 7

AUTO SLACK ADJUSTER 65175P

S-CAMS 20 5/8

HUB CAP 340-4009 STEMCO

BRAKE CHAMBERS BTS30/30-45

BRAKE DRUM 89996B MOTORWHEEL

WHEEL SEAL 340-4009 STEMCO

AIR BAG S-21800 (23K AXLES)

AIR BAG S-21784 (25K AXLES) #28 AND ON

HUB C-22549 HENDRICKSON (10-2011-141 WALTHER'S)

BEARINGS HM218248/HM212049

***PLEASE REFER TO HENDRICKSON SUPPLEMENT FOR ALL OTHER PART
NUMBERS***

AULICK INDUSTRIES

LIMITED WARRANTY POLICY

WARRANTY: Aulick Industries warrants that trailer model: _____, Serial number: _____ (hereinafter referred to as "Equipment") manufactured by Aulick Industries will be free from defects in materials and workmanship, provided that the Equipment warranted hereunder is operated by the purchaser in accordance with the practices approved by Aulick Industries with loads not exceeding the manufacturer's rated capacities and with loads that are not abrasive or corrosive in nature.

Aulick Industries sole obligation under this warranty shall be limited to repairing or replacing, at its option, in accordance with the schedule below, any defective part of the warranted Equipment, which shall be returned to Aulick Industries factory location or authorized service facilities and then Aulick Industries examination shall disclose to its satisfaction to have been defective; provided, however, that the purchaser notifies the Warranty Department immediately upon identification of defect, and such defective Equipment is returned by the purchaser to a Aulick Industries location authorized by the Warranty Department of Aulick Industries with transportation and freight charges prepaid within fifteen (15) days after discovery or defective conditions.

The customer shall not be required to deliver defective Equipment to Aulick Industries if the Equipment was destroyed as a result of defect covered in this warranty and the Aulick Industries Warranty Department is reasonably satisfied that the Equipment was defective at the time of the sale.

All labor and parts warranty must be authorized by Aulick Industries Warranty Manager. Failure to do so will result in no warranty payment of any kind.

THIS WARRANTY IS EXPRESSLY IN LIEU OF ALL OTHER WARRANTIES OF MATERIAL, WORKMANSHIP, DESIGN, APPLICATION OR OTHERWISE WITH RESPECT TO ANY EQUIPMENT, WHETHER EXPRESS OR IMPLIED, INCLUDING WARRANTIES OF MERCHANTABILITY AND FITNESS FOR A PARTICULAR PURPOSE, AND OF ALL OTHER OBLIGATIONS OR LIABILITIES ON THE PART OF AULICK INDUSTRIES.

Warranty Schedule Components and Structural

- I. Axles, Suspensions, Landing Gear, Wheels, Rims, Hydraulic components Brakes ,and other manufactured items carry their own individual warranty**

- II. Frame and all structural components , plastic liner , rear gate , knife gate , chain and flaps and rubber seals are warranted for one (1) Year from date of purchase on New trailers**

